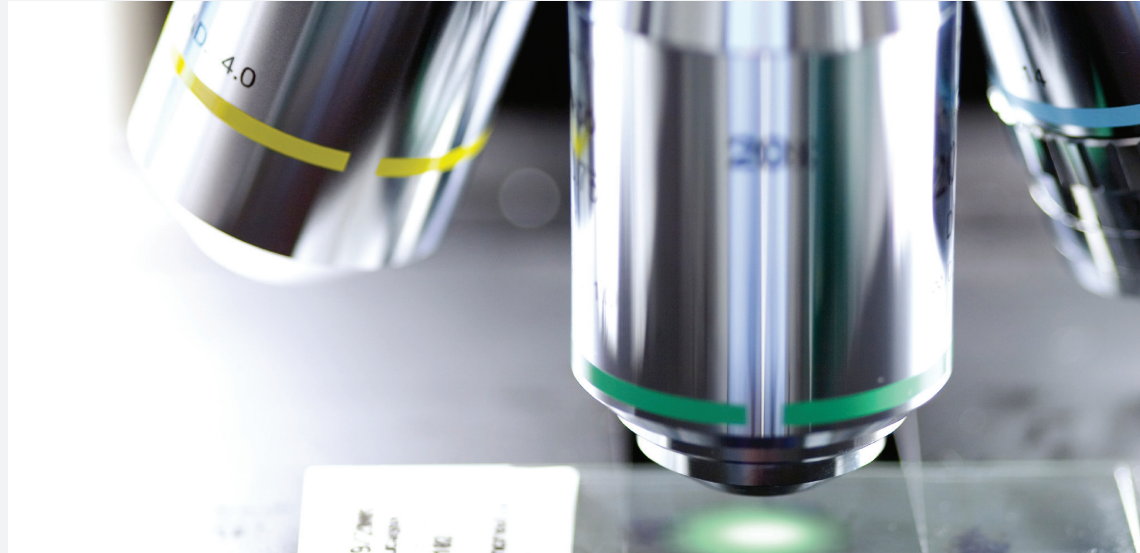


Analytical Services

Global Services Portfolio



Our advanced analytical chemistry testing services are provided by a large group of experts in analytical sciences, applications, materials technology and packaging. Expertise and laboratories are located globally and cover a multitude of industries, including plastics, coatings, dyes, paper, textiles, food and beverage, pharmaceuticals, medical devices, and cosmetics.

- Chemical Analysis - GLP-Laboratories
- Microscopy and Surface Analysis
- Trace Analysis - GLP/GMP-Laboratories

High-end analytical testing for wide range of industries

Intertek Expert Services laboratories are equipped with state-of-the-art instrumentation that enables our experts to perform complex analyses, substance identification, methods development and a wide range of other capabilities tailored to meet customer needs.

Chemical Analysis - GLP Laboratories

- Structure elucidation, chemical identification, deformulation, reverse engineering
- Determination of impurities and contaminants: By-product profiling and identification, identification of unknown compounds
- Preparation and qualification of reference material
- Analytics in regulated areas: REACH, GLP/GMP, CoAs for registration
- Molecular weight distribution, In-situ reaction monitoring, reaction kinetics, color and white metrics
- Special library services: MS, IR, Raman, NMR
- Open access and express services: NMR, LC-MS, FTIR, GC-MS
- Failure analysis: Foreign particles, deposits, blooming, discoloration



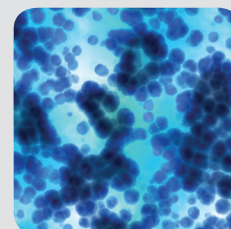
Microscopy and Surface Analysis

- Surface sensitive analysis: Thin film analysis, depth profiling, penetration studies, cleanliness studies
- Surface properties: Topography, roughness, morphology, elasticity
- Particle properties: Size, shape, morphology
- Failure analysis: Elemental microanalysis, cross-section analysis
- Analytical imaging applications: ECX-mapping, STEM, SIMS-mapping, FTIR, Raman, polymorphism, uniformity, distribution, chemometry
- Open access and express services: SEM and AFM



Trace Analysis - GLP/GMP-Laboratories

- Extractables and leachables studies for all types of pharmaceutical container closure systems and in-process materials
- Impurity profiling: APIs and finished drug systems, screenings and failure investigations
- Method development & validation (GMP): QC methods and process validation methods
- Reference material qualification
- Classical trace analysis: PCDD/Fs, PCBs, PAHs, N-Nitrosamines, fluoro-organics, aromatic amines organo tin compounds
- VOCs: Volatile organic compounds, residual solvents & odor problems
- OECD-methods (GLP): Water solubility, Kow- and Koc-value, hydrolysis studies, soil sorption, etc.
- Migration studies according to EU and/or FDA guidelines



Polymer and Additive Characterization of Packaging and Device Components

- Deformulation of polymer and co-polymer systems
- Polymer characterizations (MW determination, melt flow index, tensile strength)
- Identification and quantitation of additives like stabilizers, antimicrobials, and colorants including transformation and degradation products
- Stability: Natural and artificial weathering, oven-aging
- Failure analysis



DISCLAIMER

NOTHING IN THIS PUBLICATION MUST BE CONSTRUED AS A REPRESENTATION OR WARRANTY, EXPRESS OR IMPLIED, OF FITNESS OF A PARTICULAR SOLUTION FOR A PARTICULAR PURPOSE. Any data or results given are based on controlled or laboratory work and must be confirmed by the Buyer by testing under its own conditions. Under no circumstances will Intertek Inc. be liable for any damages arising from reliance on the statements contained herein which are intended for general guidance only.

Contact us to discuss your specific needs:

Europe/Head Office
P.O.Box, 4002 Basel
Switzerland
Tel: +41(0)61 686 48 00
Fax: +41(0)61 686 48 99

Email: webinfo.as@intertek.com
www.intertek.com/ies

UK
Tel: +44 (0) 7718152000

APAC
China
Tel: +86(532)8099-3568
India
Tel: +91(22) 67421512

NORTH AMERICA
Tel: + 1(251) 716 1126

LATIN AMERICA
Tel: +55(13)2101-3000